

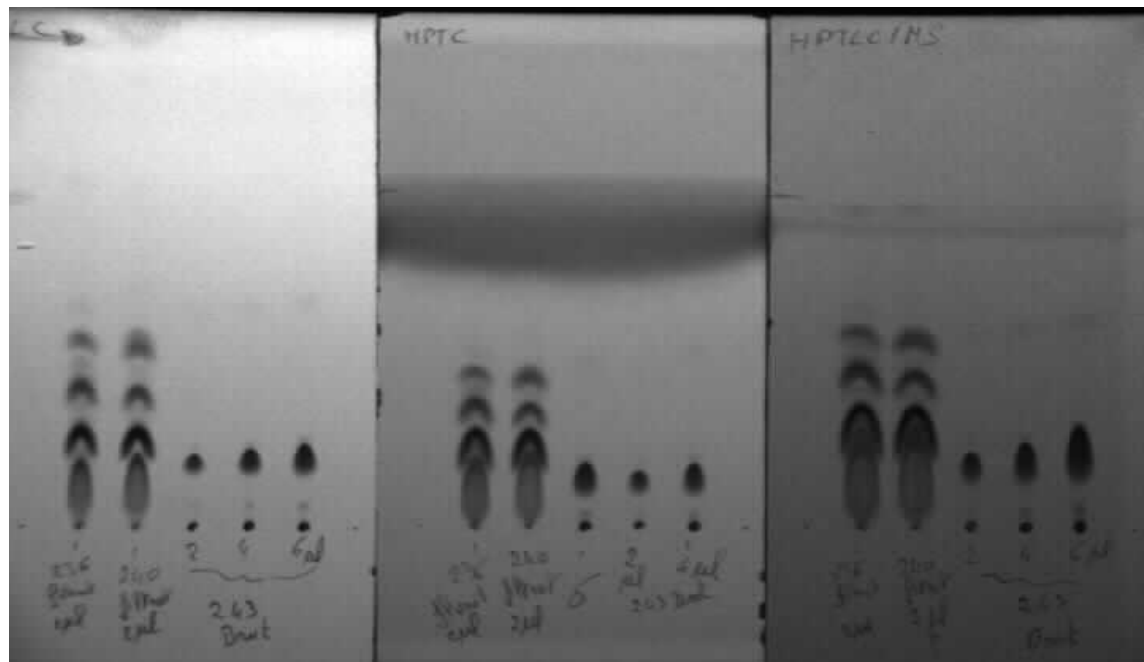
Plaque HPTLC/MS ? Pourquoi pas !!

Mr François Bretin, Chimie Médicinale Oncologie,
Sanofi R & D Vitry-sur-Seine

Mr Francis Maquin, Analytical Sciences Paris,
Sanofi R & D Vitry-sur-Seine

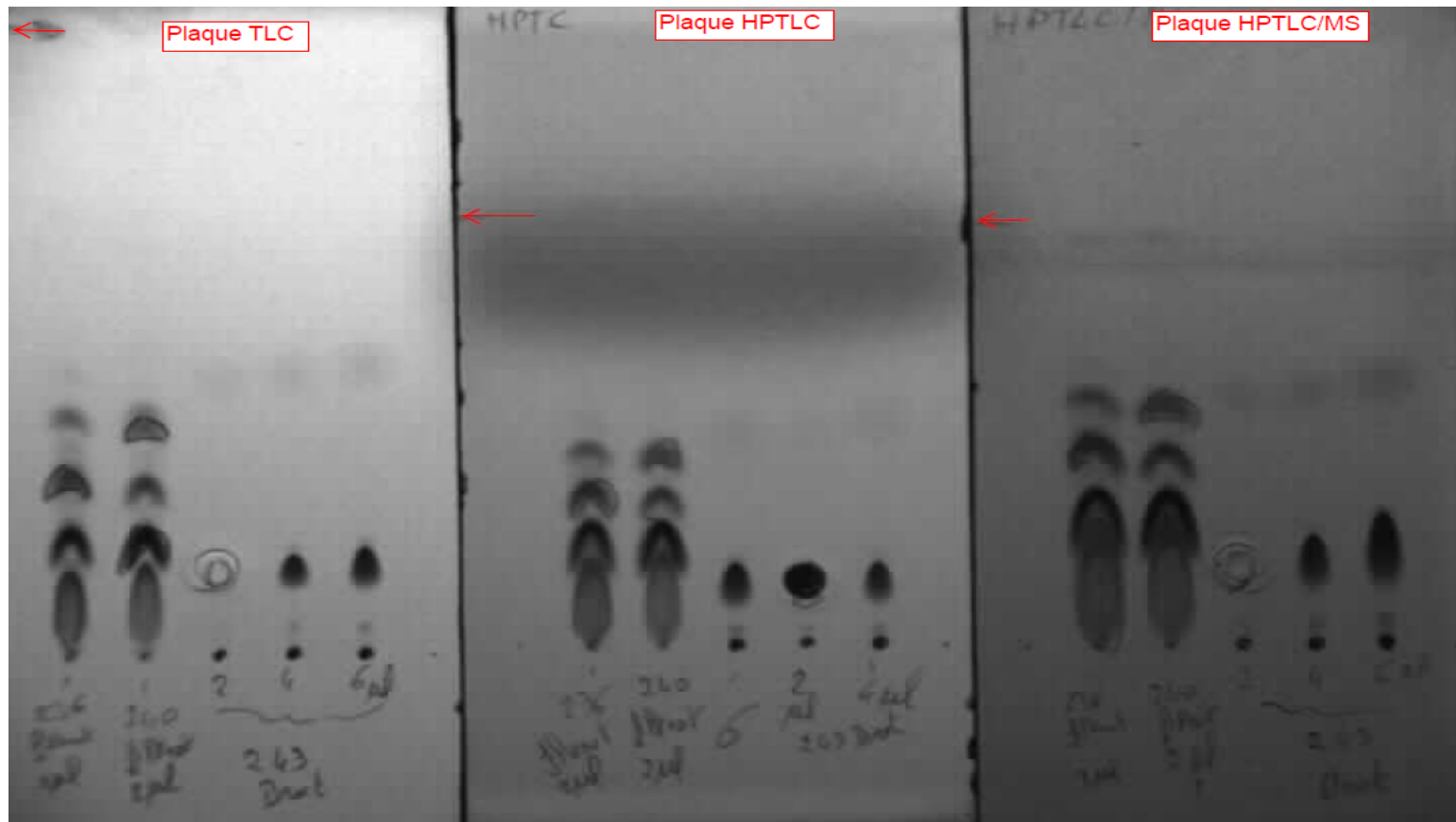
Test plaques HPTLC/MS

- Sur plaque TLC, HPTLC et HPTLC/MS, 5X10
 - Dépôt de 2, 4 et 6 μl d'une solution de 1.2 mg de VAC.FBN5.243 brut (MW=457) Soit $C=2.62 \cdot 10^{-3} \text{ M}$
 - Distance de migration: 4 à 5 cm
 - Solvant de migration: $\text{CH}_2\text{Cl}_2/\text{MeOH}$ (99/1)



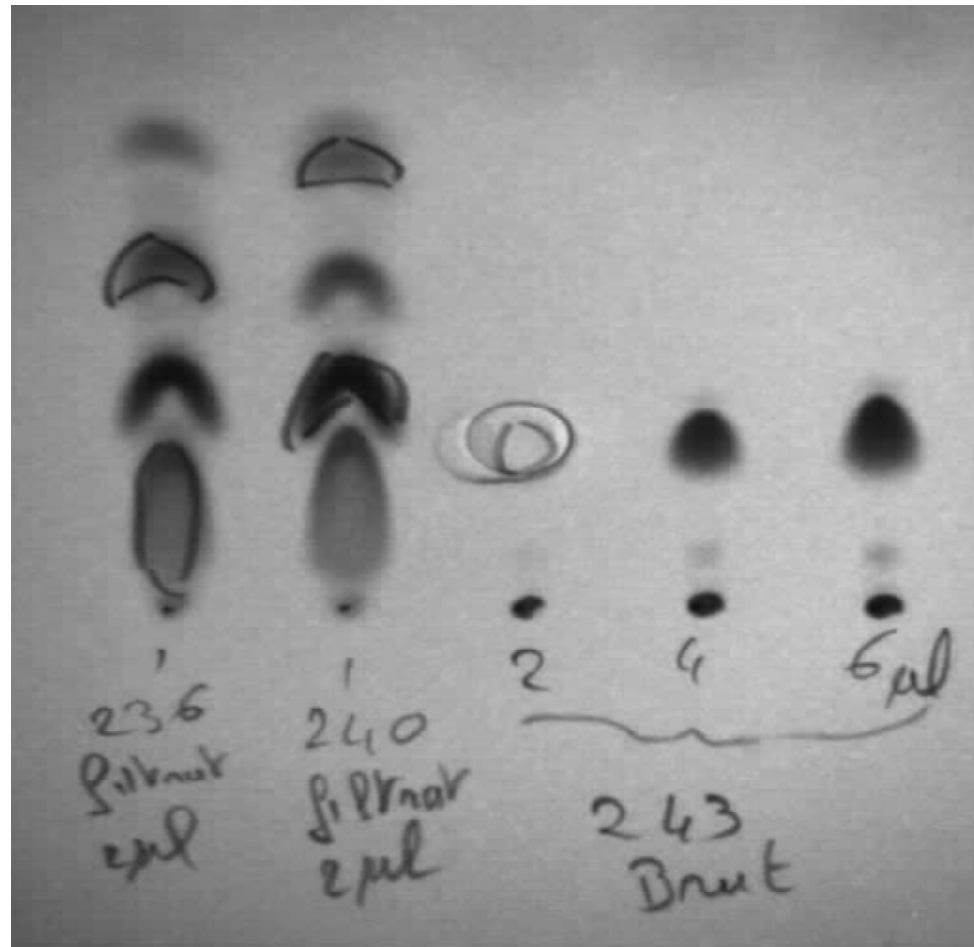
Test plaques HPTLC/MS

- Analyse sur la fraction 2 μ l



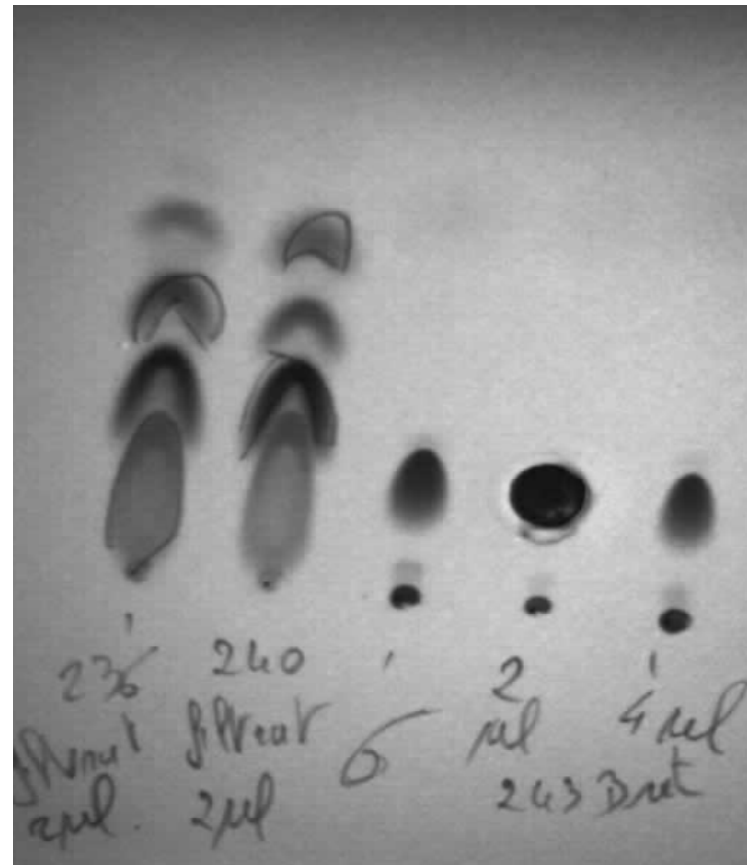
Test plaques HPTLC/MS

- Extraction sur TLC: principalement désorption du produit



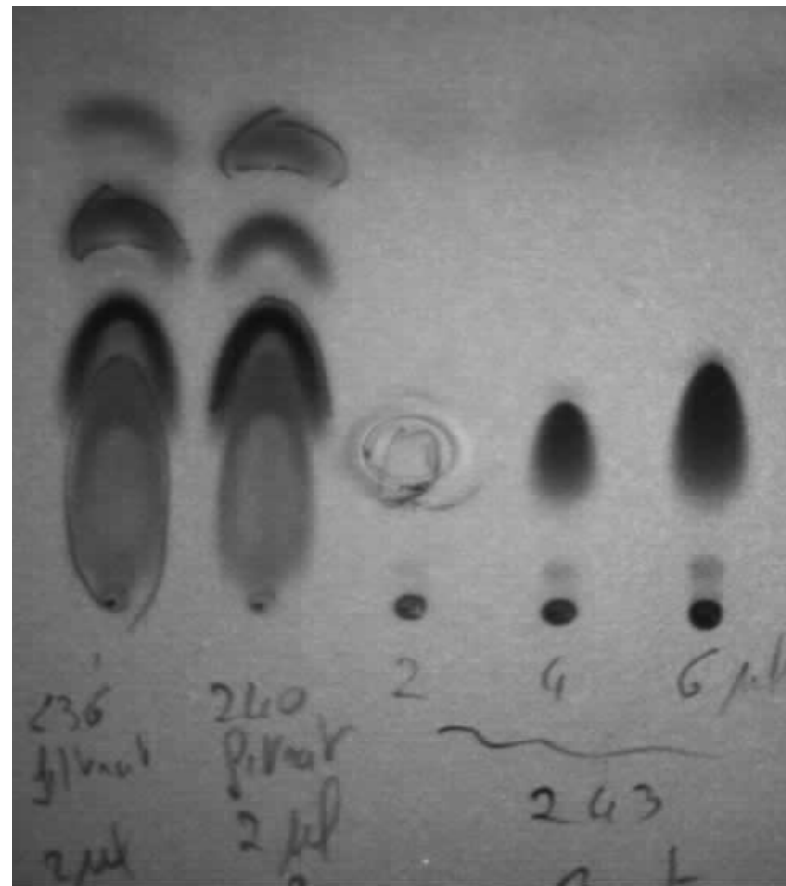
Test plaques HPTLC/MS

- Extraction sur HPTLC: entrainement de la silice



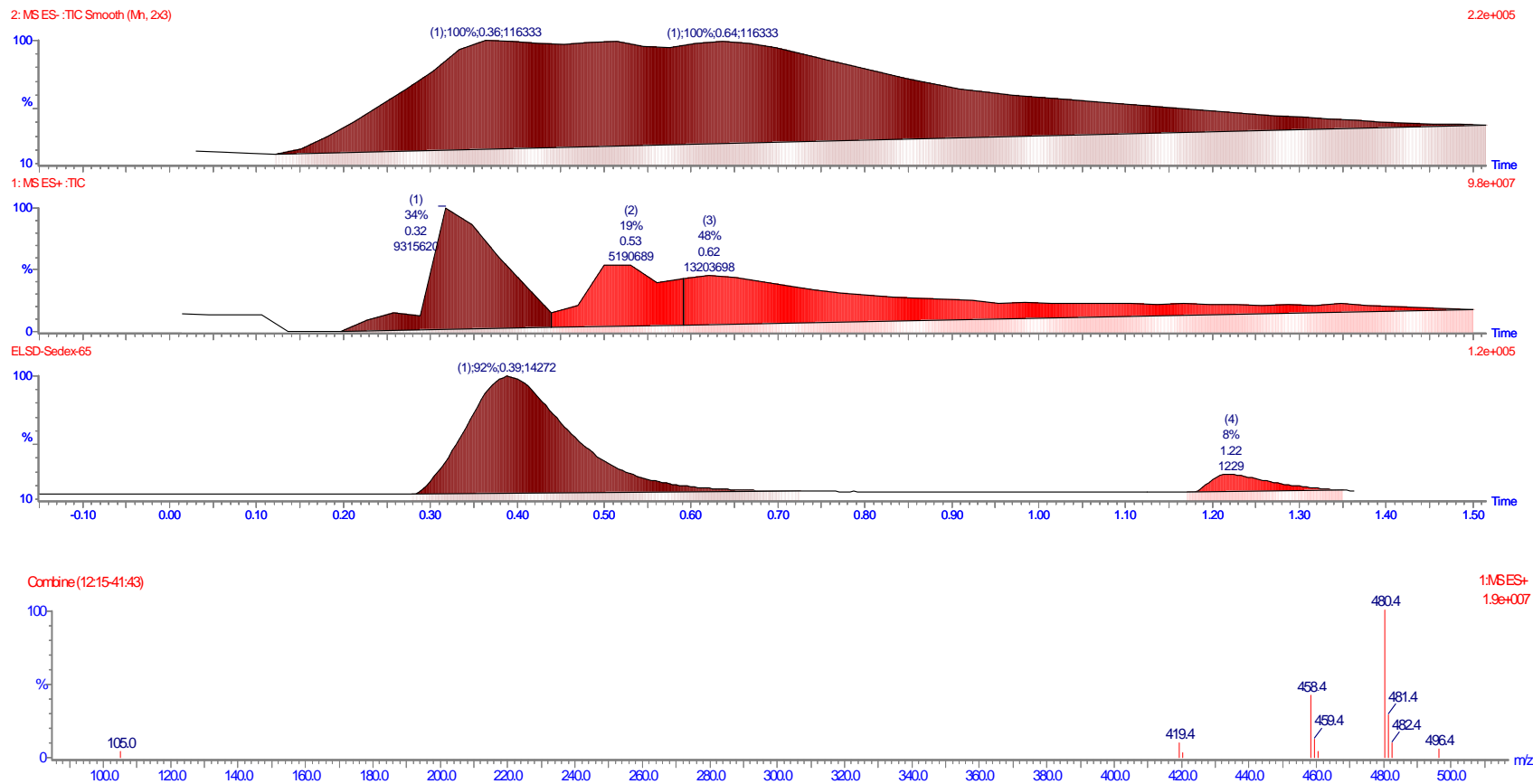
Test plaques HPTLC/MS

- Extraction sur HPTLC/MS: entrainement ou soulèvement de la silice



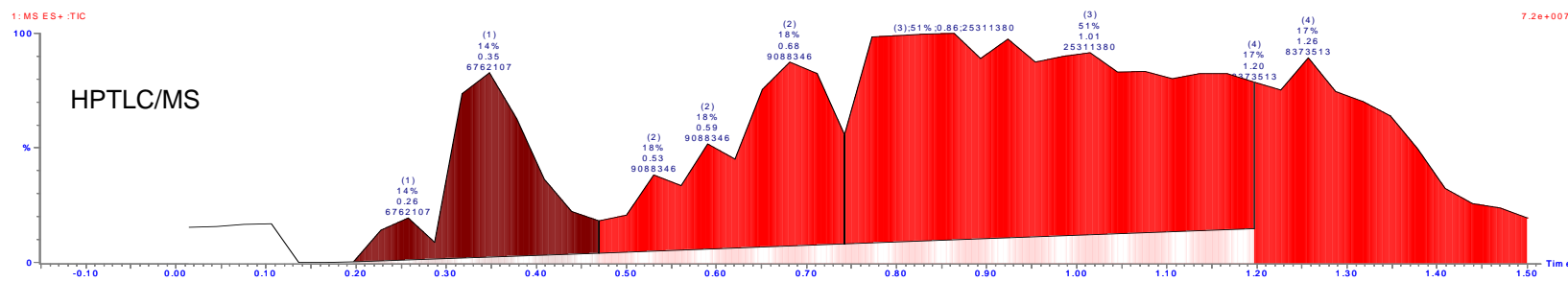
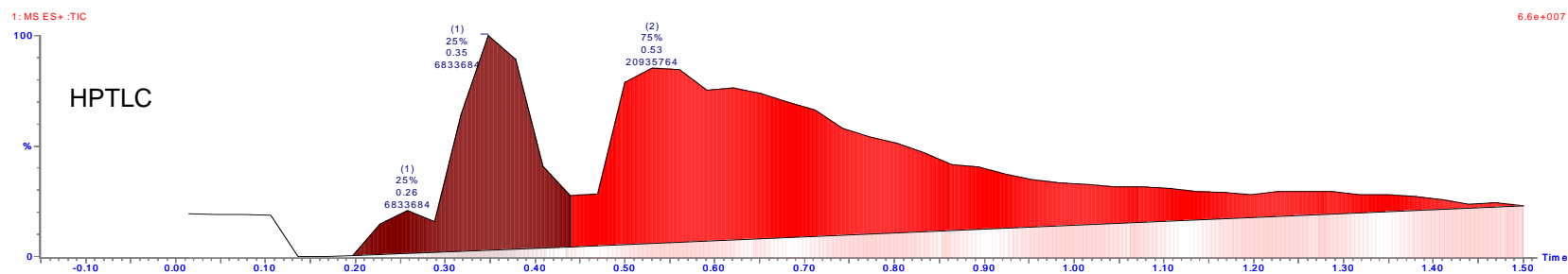
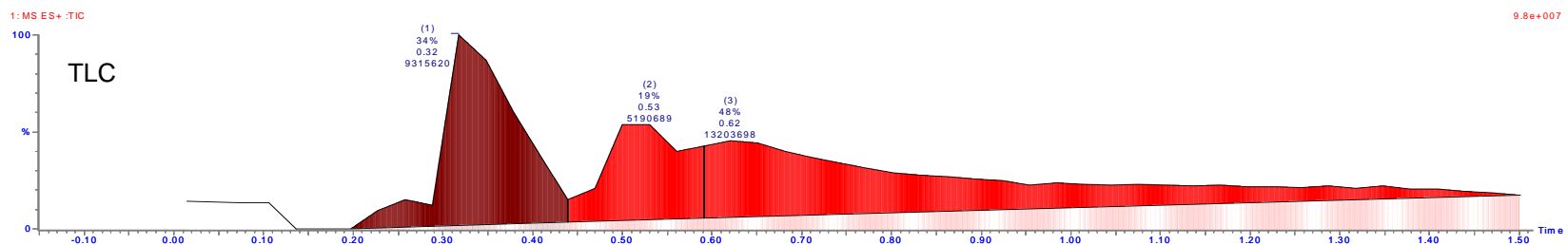
Test plaques HPTLC/MS

● Analyse du spectre: rapport type

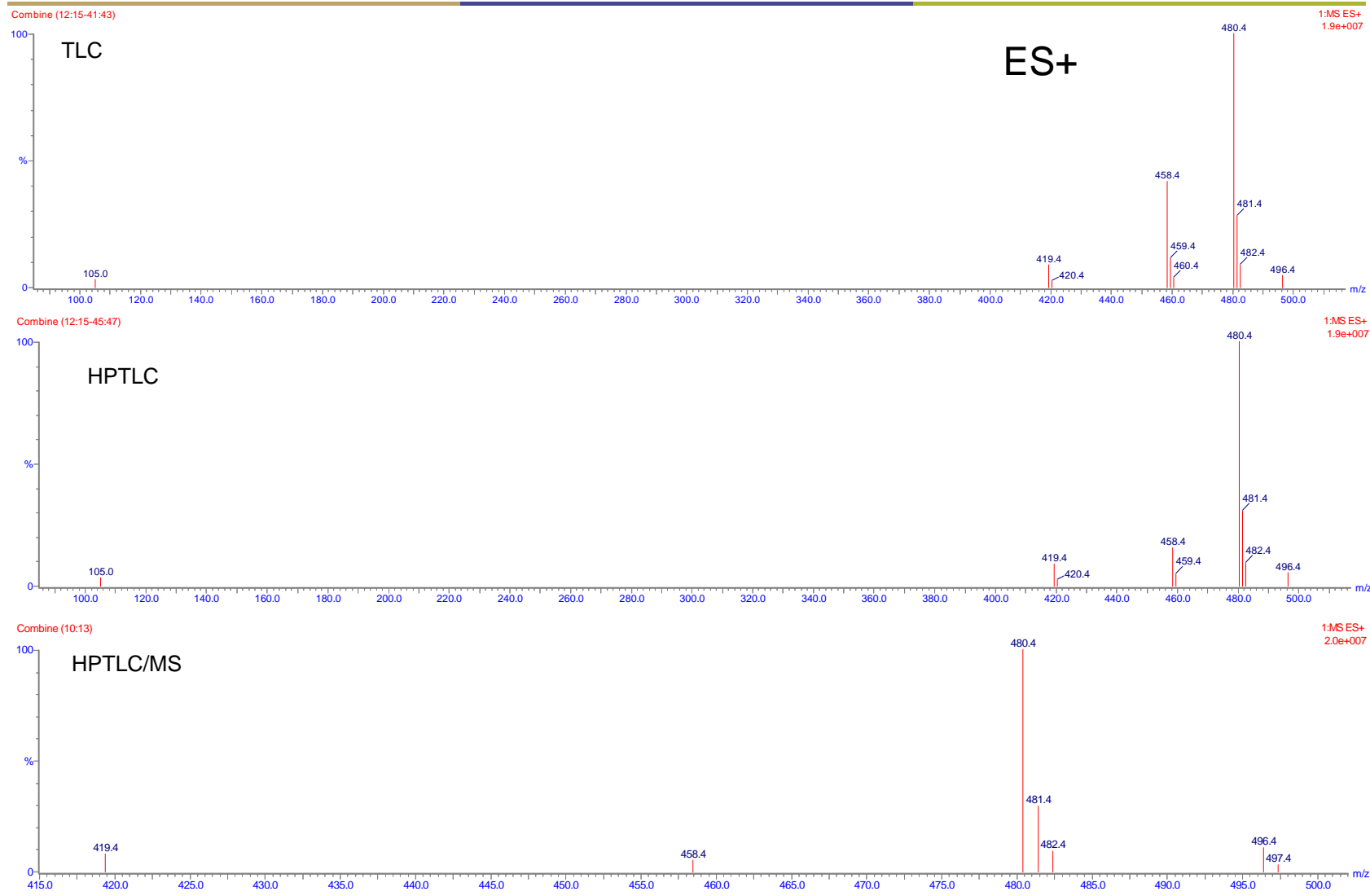


Test plaques HPTLC/MS

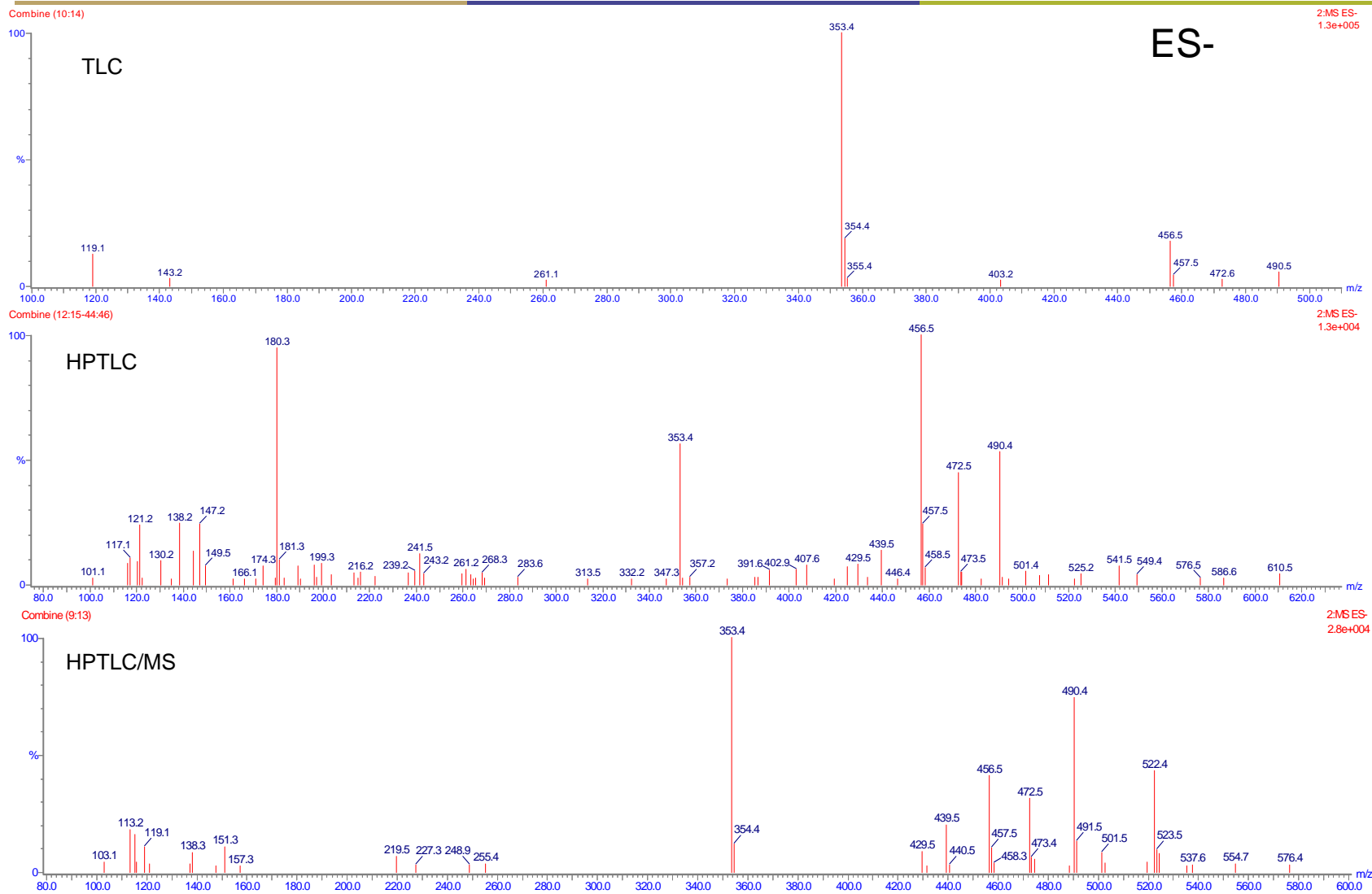
Comparaison des spectres TIC/ES+ des différentes plaques



Test plaques HPTLC/MS

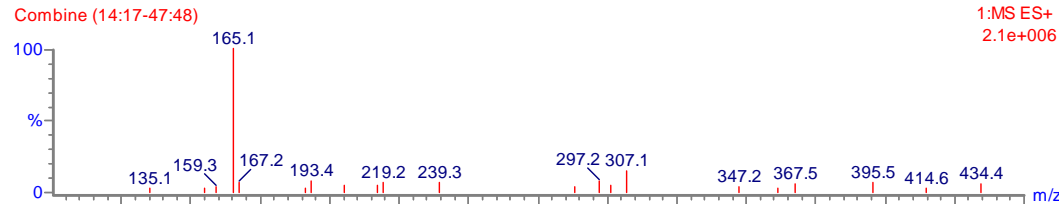


Test plaques HPTLC/MS

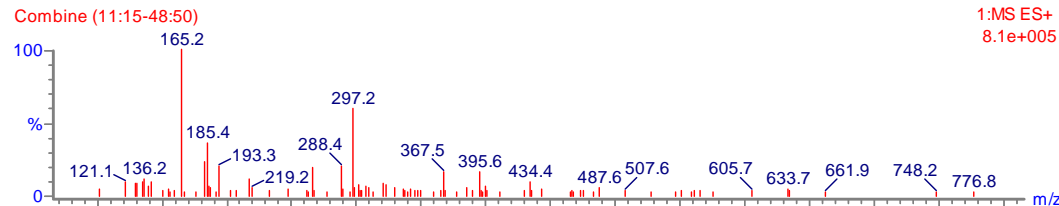
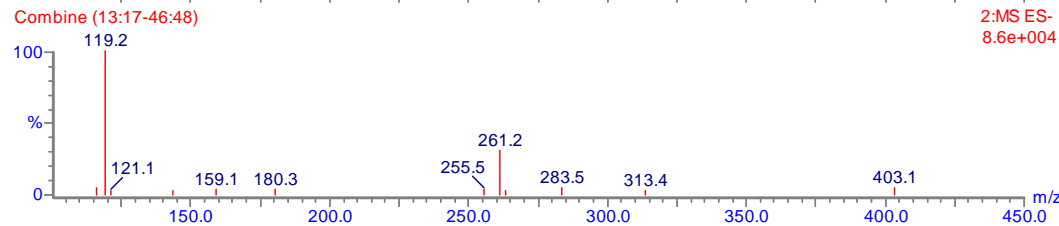


Test plaques HPTLC/MS

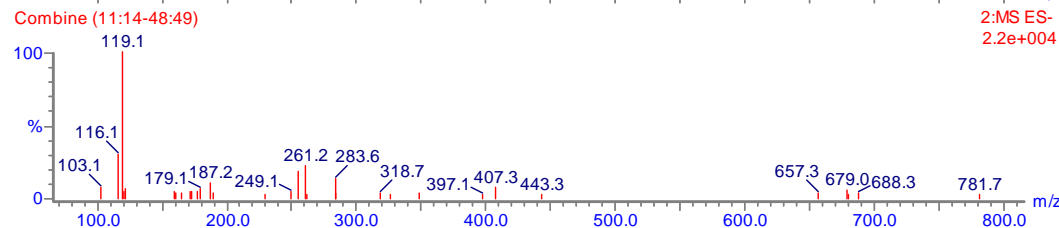
- Test sur plaques TLC, HPTLC et HPTLC/MS après migration sans dépôt d'échantillon.



ES+ et ES- sur TLC/blanc

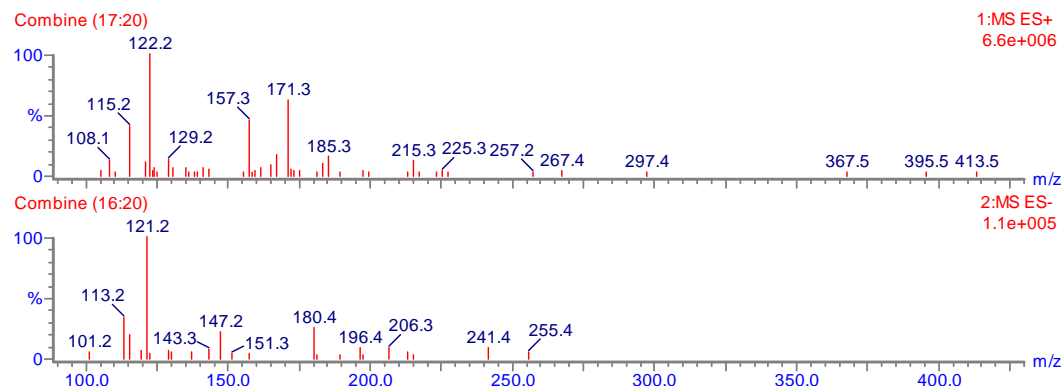


ES+ et ES- sur
HPTLC/MS/blanc

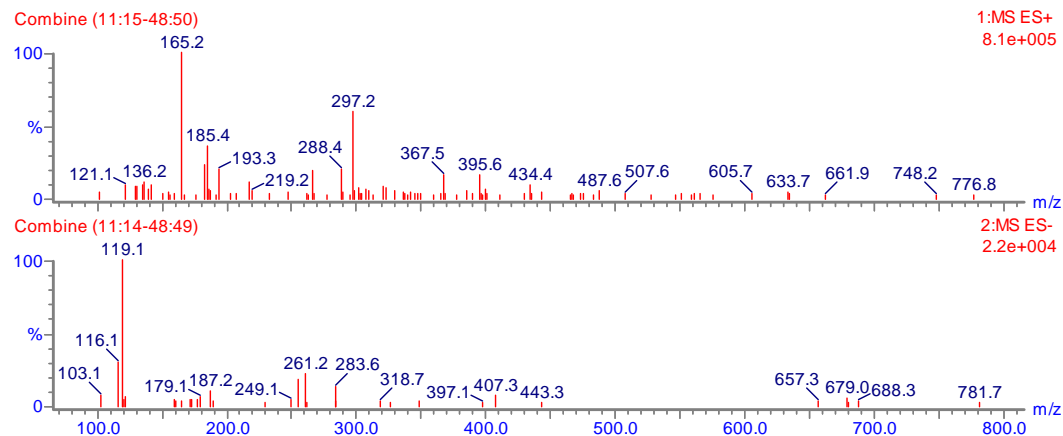


Test plaques HPTLC/MS

- Test sur plaques TLC, HPTLC et HPTLC/MS après migration sans dépôt d'échantillon.



ES+ et ES- sur
HPTLC/blanc



ES+ et ES- sur
HPTLC/MS/blanc

Test plaques HPTLC/MS

- Conclusion

Dans nos conditions d'utilisation nous ne voyons pas d'amélioration au niveau du spectre de masse. Peut être plus adapté sur de l'analyse quantitative ?