

## Nouvelles plaques spéciales MS



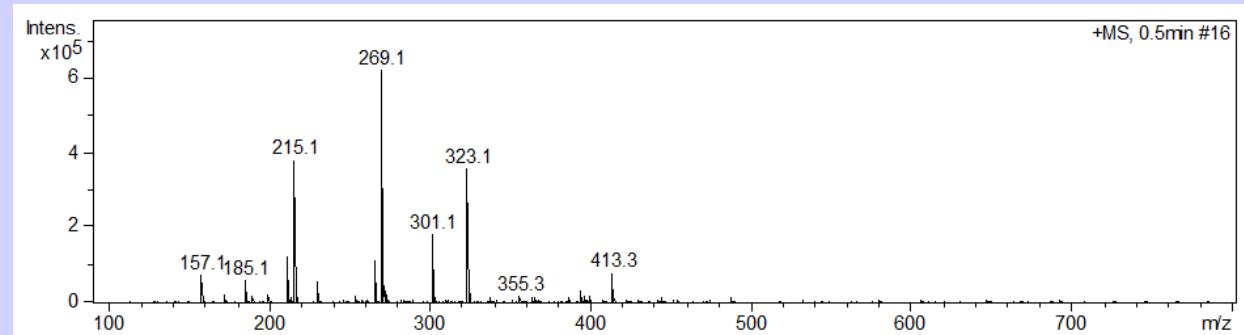
Item nr. 1.00933.0001: TLC silica gel  
60 F254 MS-grade 25 glass plates  
20x20cm

Item nr. 1.00934.0001: HPTLC silica  
gel 60 F254 MS-grade 25 glass  
plates 20x10cm

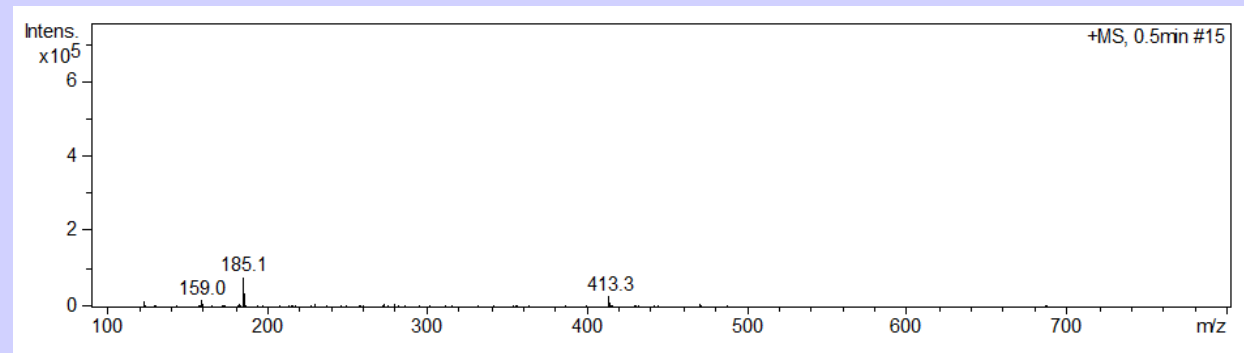
# Nouvelles plaques spéciales MS



Avant  
(5642)

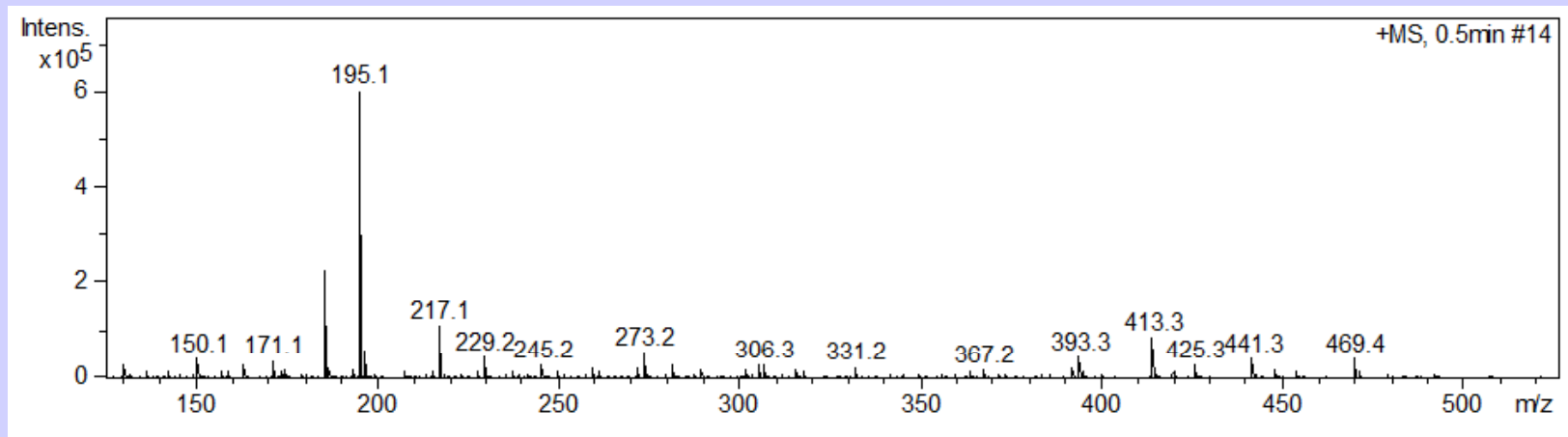


Après  
(934)



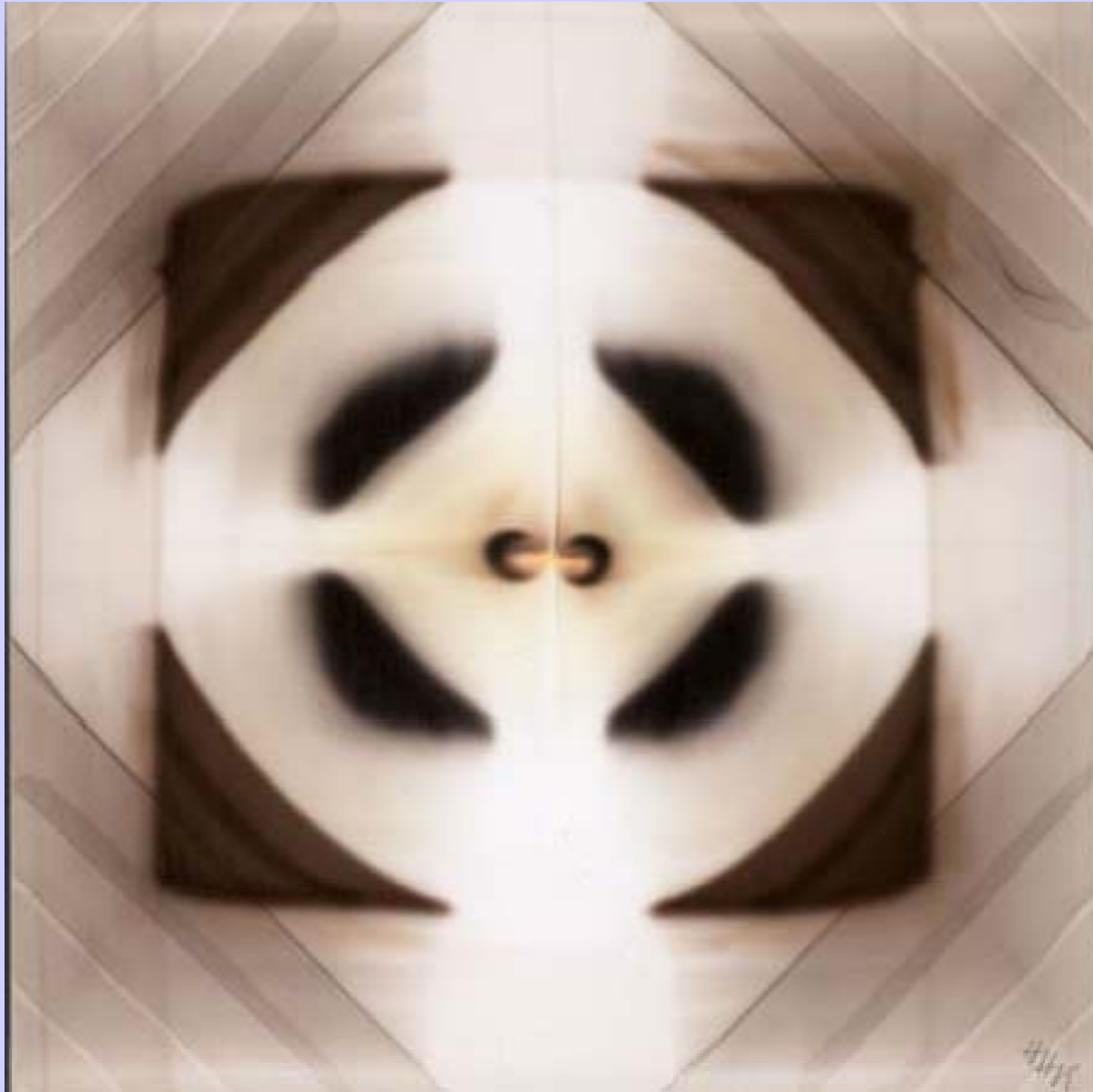
mobile phase ACN/water (95/5)

# Nouvelles plaques spéciales MS



20 ng de caféine sur HPTLC MS  
réf 1.00934.0001 Lot n°HX260247

mobile phase ACN/water (95/5) + 0.1% formic acid



*"Chromart" by Herbert Halpaap in 1986-1987*