

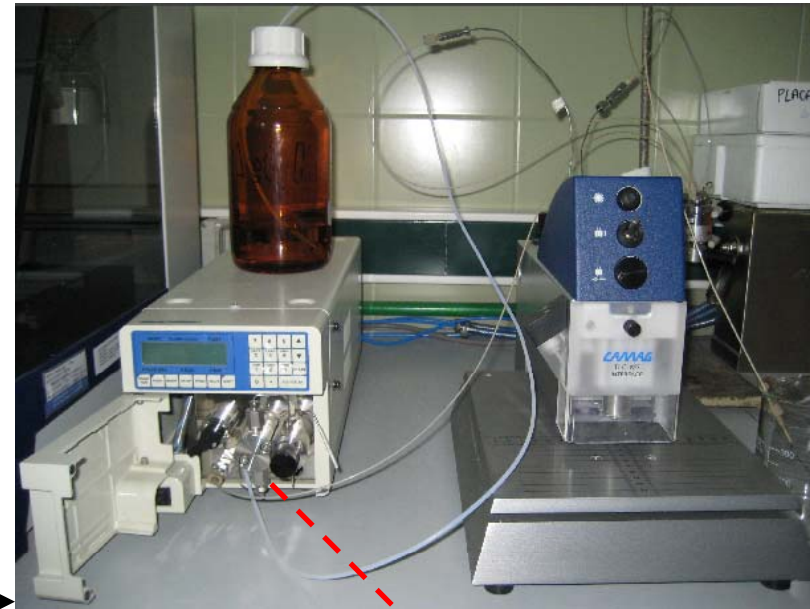
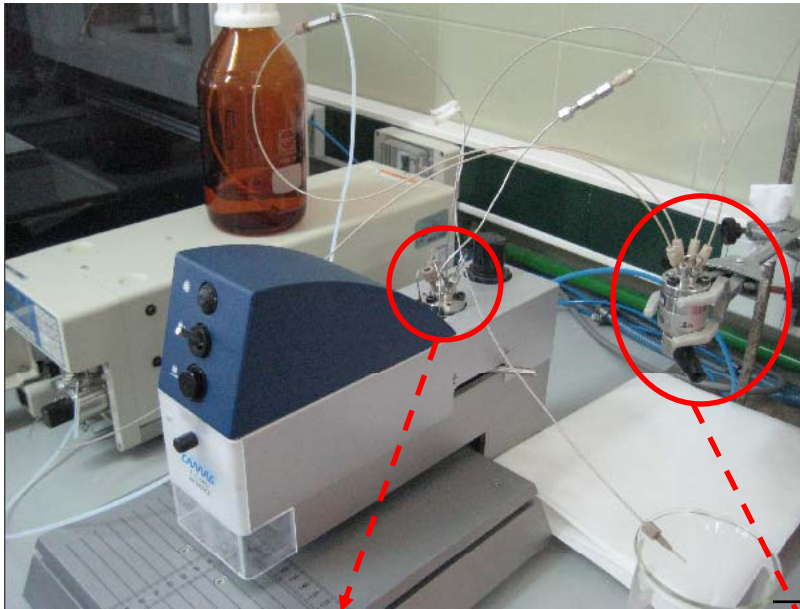
# Isolement des cycloparaffines et paraffines d'un huile lubrifiant avec le TLC-MS

**Carmen Jarne**

**CSIC**  
**Instituto de Carboquímica**  
**Zaragoza-Espagne**

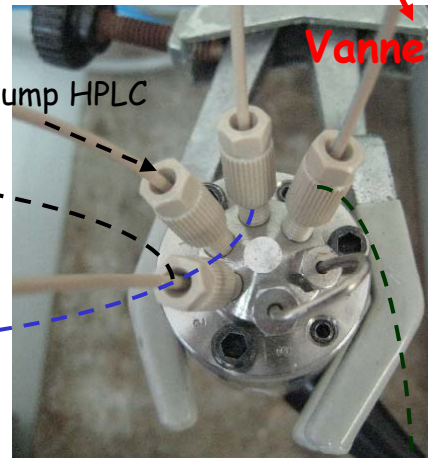


# Interface TLC-MS



Vanne TLC-MS

TLC-MS TLC-MS



Pump HPLC

Vanne 6 voies

Sorti échantillon



Position nettoyage

Position travail



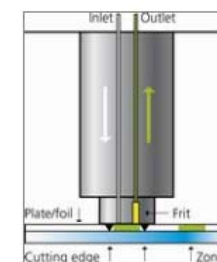
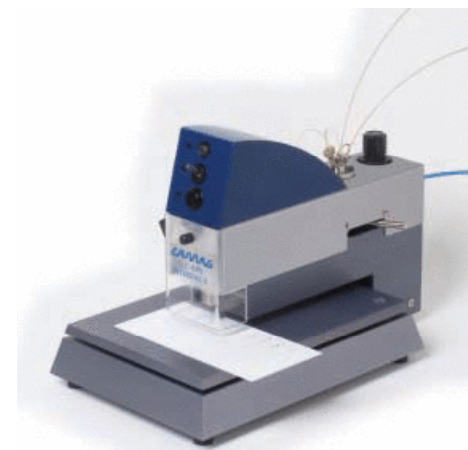
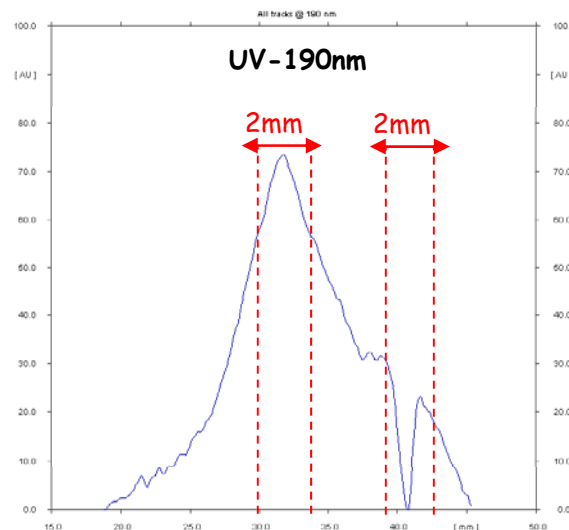
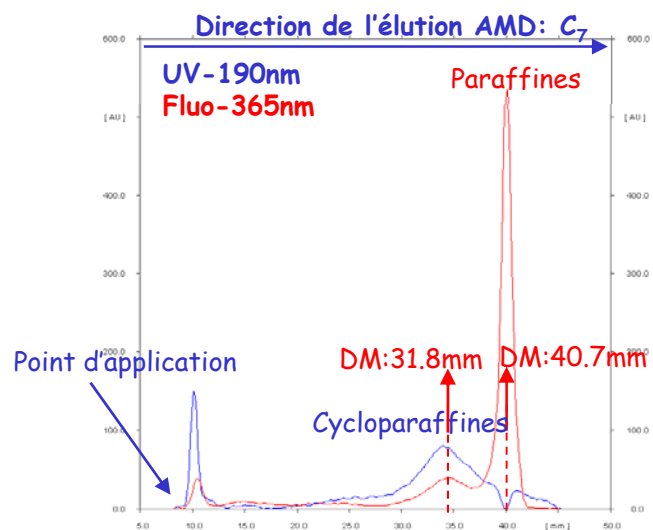
Pump HPLC - Jasco

Vanne 6voies

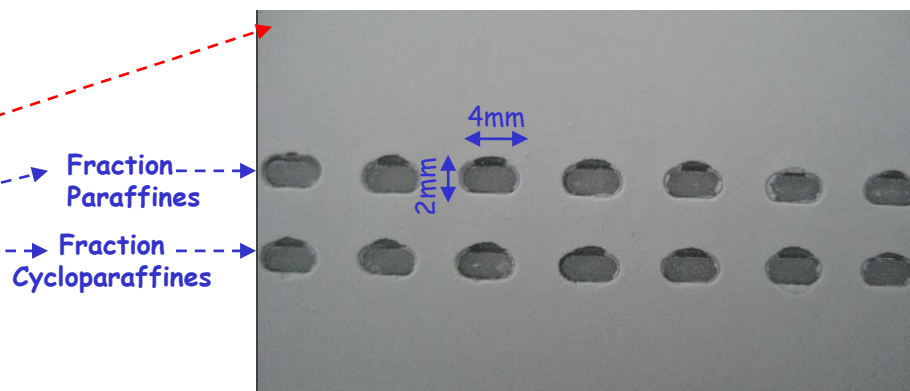
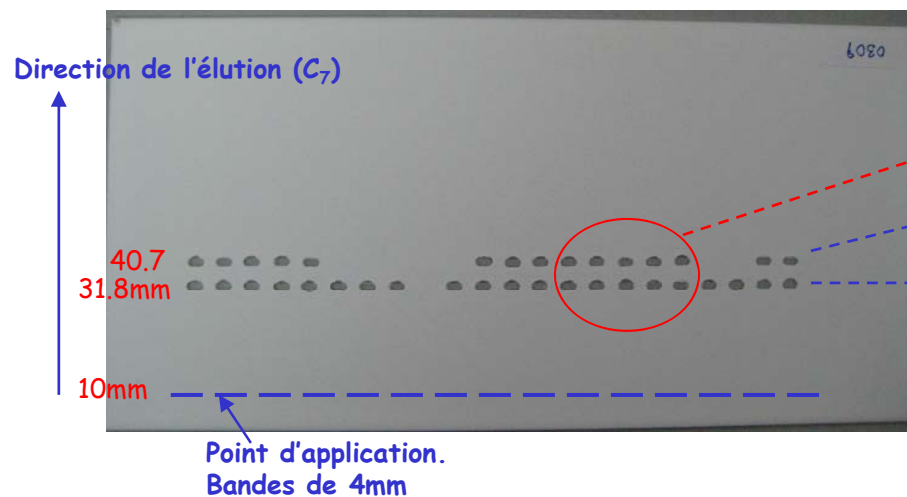
Solvant d'extraction

# Extraction TLC-MS

- Solvant d'extraction: n-Heptane
- Débit d'extraction: 0.2ml/min

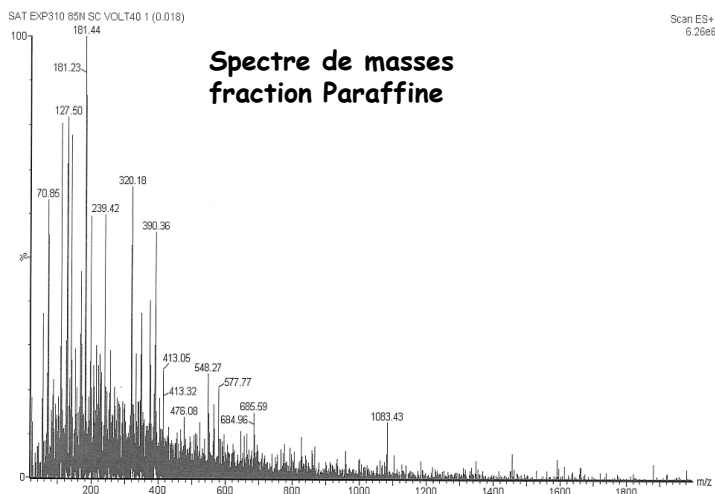
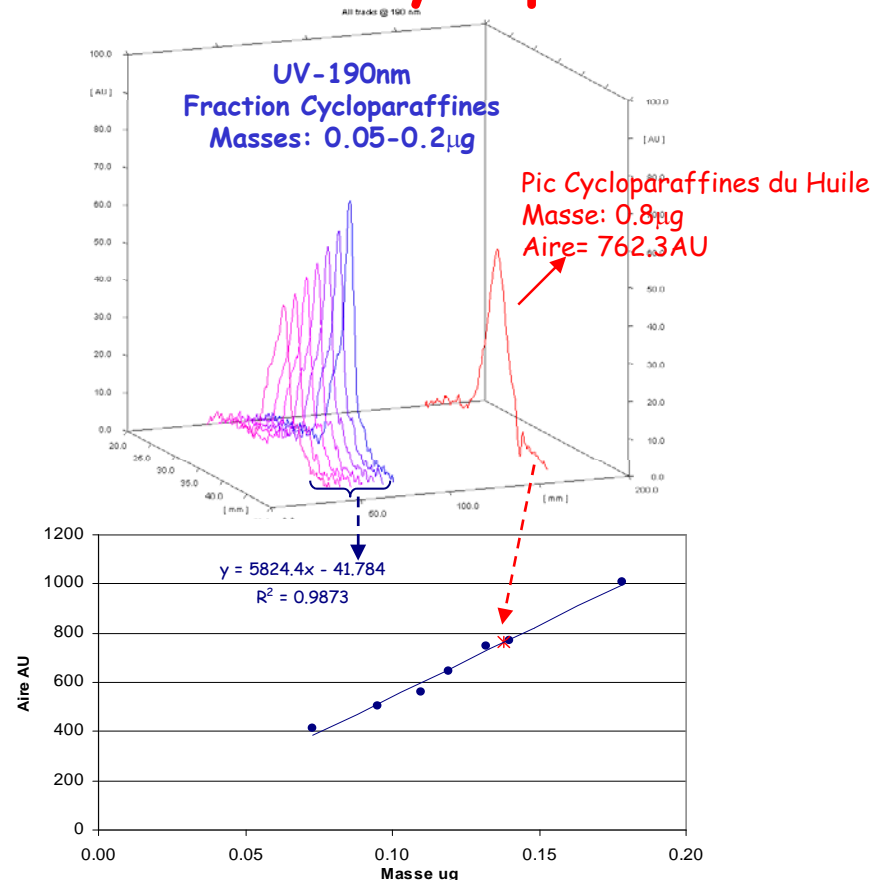
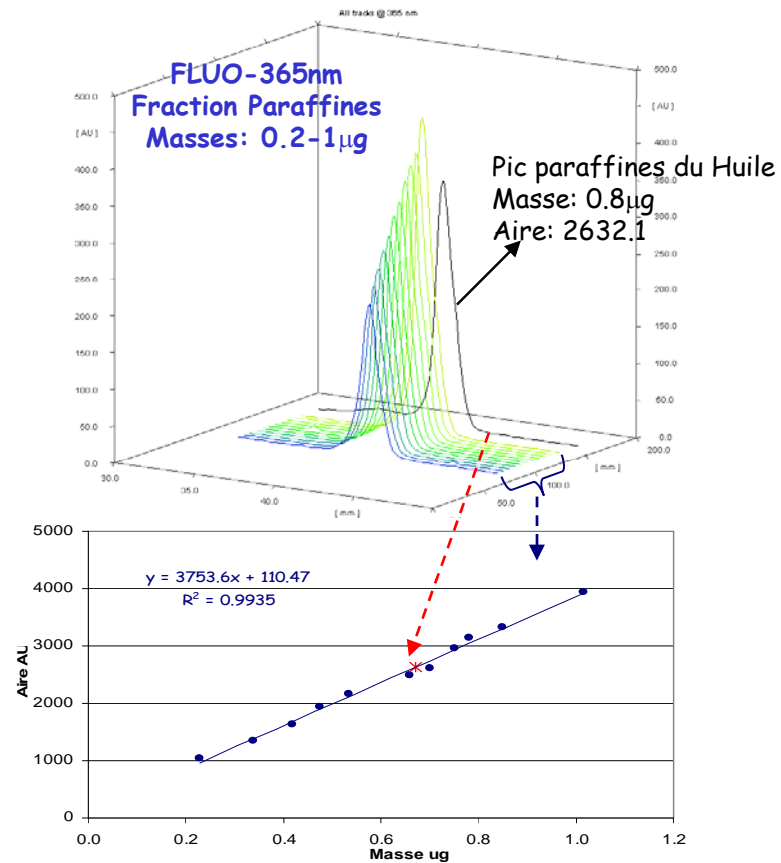


Piston: 4mmx2mm



- Récollecion des fractions et transfert direct à HPTLC-UV-Fluo pour étalonnage
- Analyse spectroscoie de masses (MS) pour identification du pic

# Quantification des fractions Paraffines et Cycloparaffines



**%Paraffines = 82.3%**  
 (Rendement d'extraction: 54.2%)

**%Cycloparaffines = 16.9%**  
 (Rendement d'extraction: 26.4%)

## Comparaison différentes techniques et Conclusions

Technique EXTRACTION	Technique ANALYSES	% PARAFFINES
Chromato-Colonne	HPLC	83.9
Chromato-Colonne	HPTLC	83.7
TLC-MS	HPTLC	82.3

- ❖ Bonne correspondance des résultats quantitatives avec les obtenus par des autres techniques
- ❖ Pour des fin préparatifs, rendement modéré mais technique très répétable