

News from CAMAG

Rolf Rolli
CEO CAMAG



Agenda

- 50 Years CAMAG
- TLC VISUALIZER – a new powerful evaluation, visualization and archiving system for TLC plates
- TLC-MS Interface
- New Area Sales Manager responsible for France

CAMMAG

1958 - 2008



CAMMAG

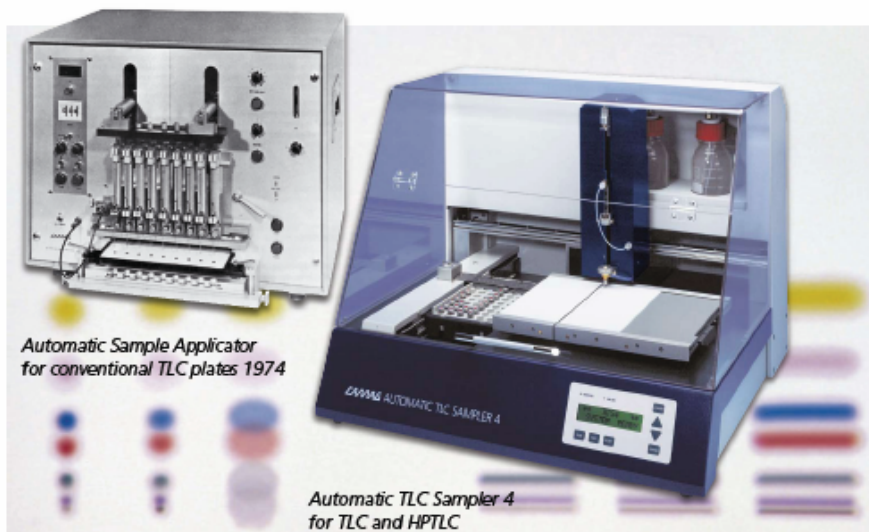
1958 - 2008

The CAMAG logo is displayed in a bold, italicized, sans-serif font.

-
- CAMAG has influenced Instrumental TLC since its inception
 - All the customers around the globe we have made the built up of CAMAG to its current position possible
 - We thank to you as our loyal customers

CBS

CAMAG BIBLIOGRAPHY SERVICE



Automatic Sample Application 1974 and today

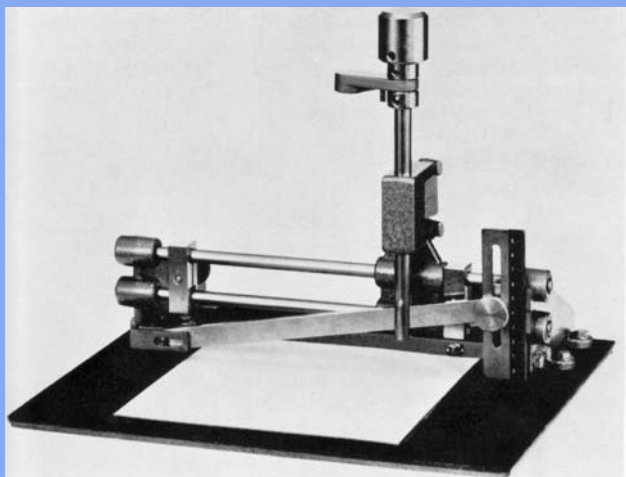


101

More on our history
to be found in the
recent edition of CBS

CAMAG

1958 – 2008 Instrumentation Development



CAMAG Chromacharger
1965

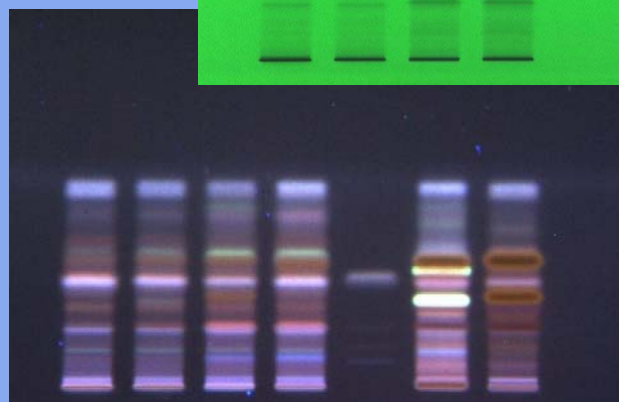
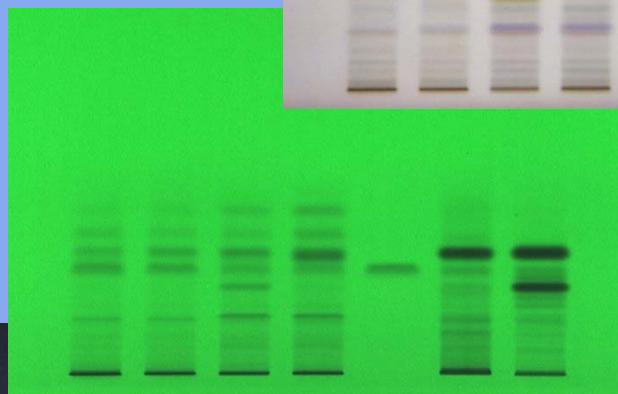
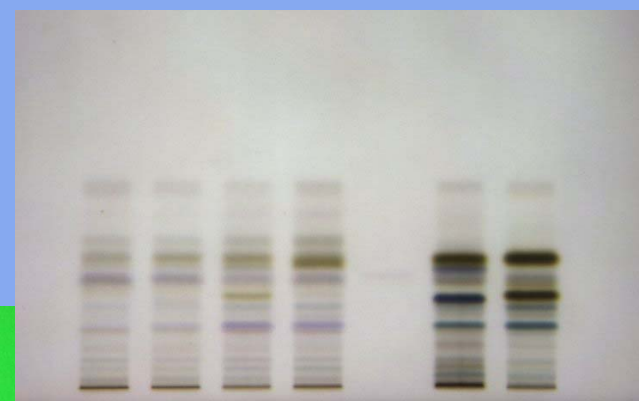
CAMAG TLC Visualizer
2008



TLC Visualizer launched Q3 2008



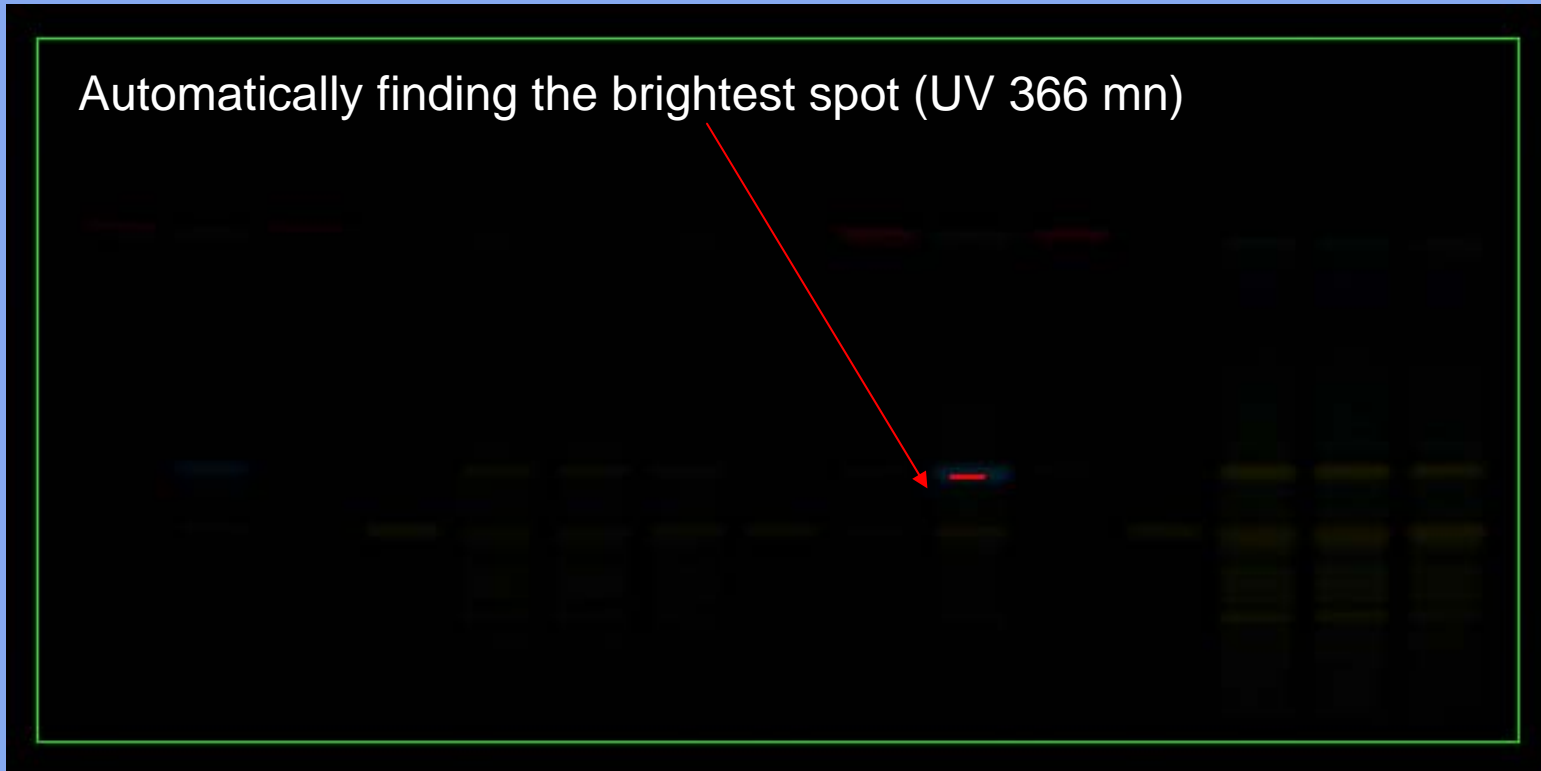
A new powerful evaluation,
visualization and archiving system
for TLC plates



Automatic Optimization

CAMMAG

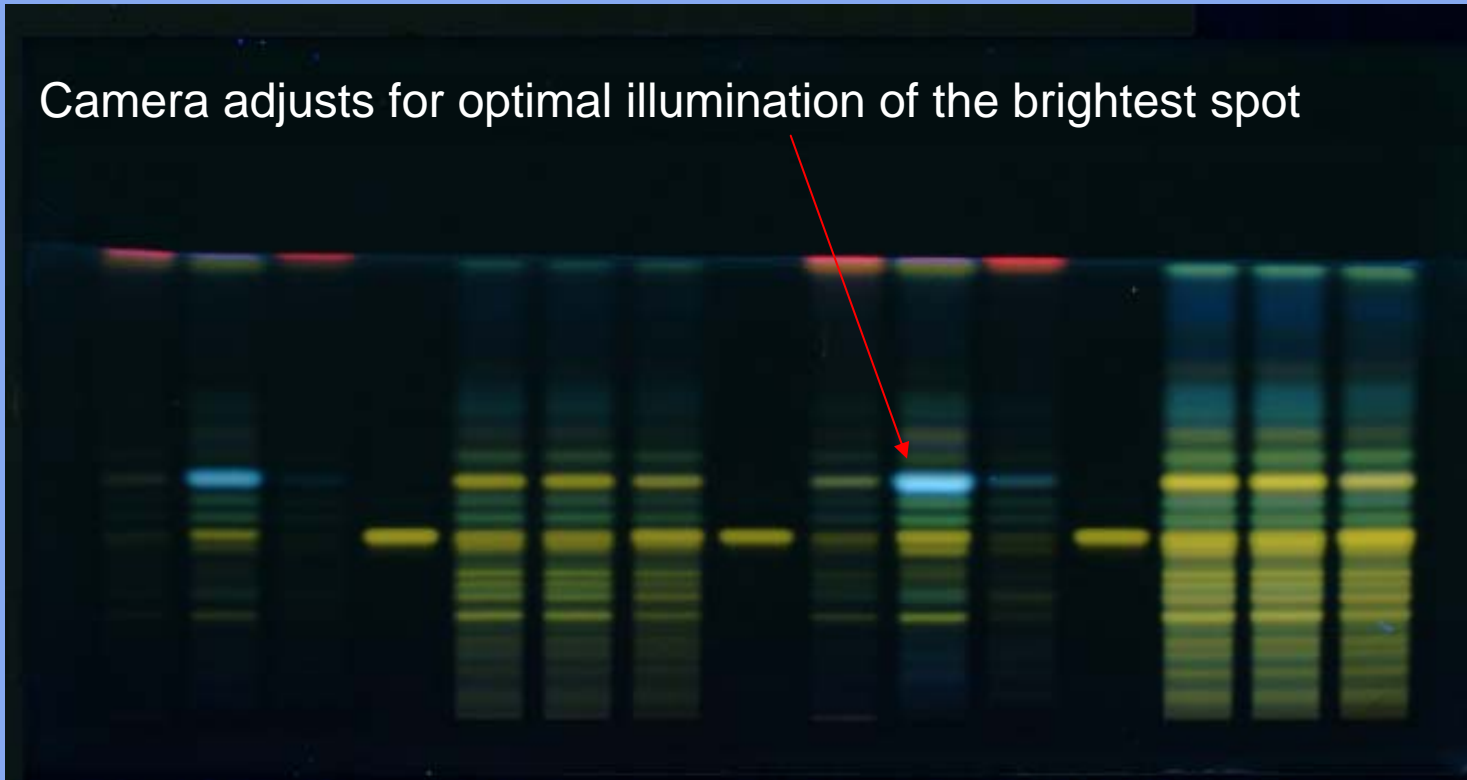
Automatically finding the brightest spot (UV 366 nm)



Automatic Optimization

CAMMAG

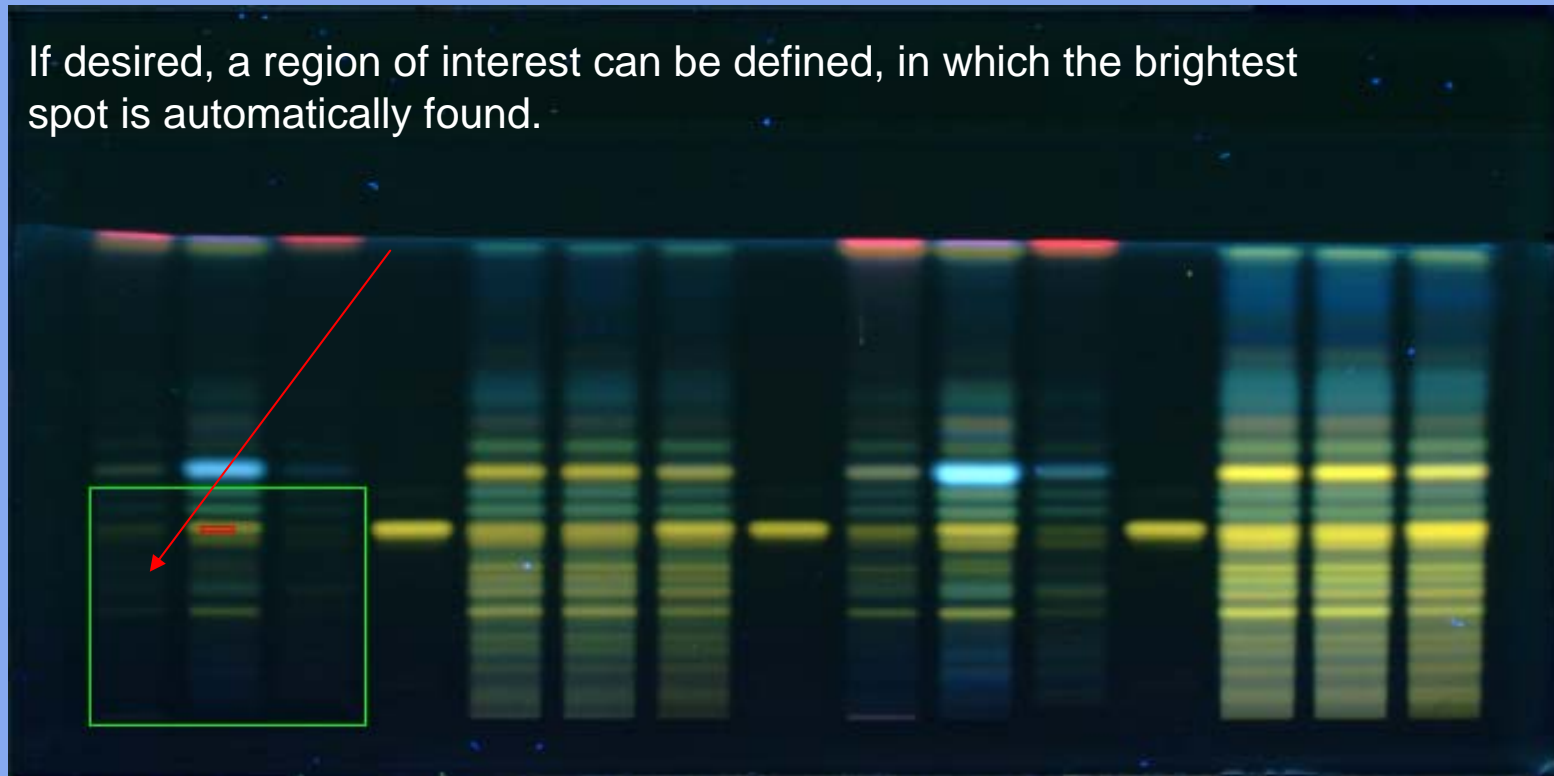
Camera adjusts for optimal illumination of the brightest spot



Manual Optimization

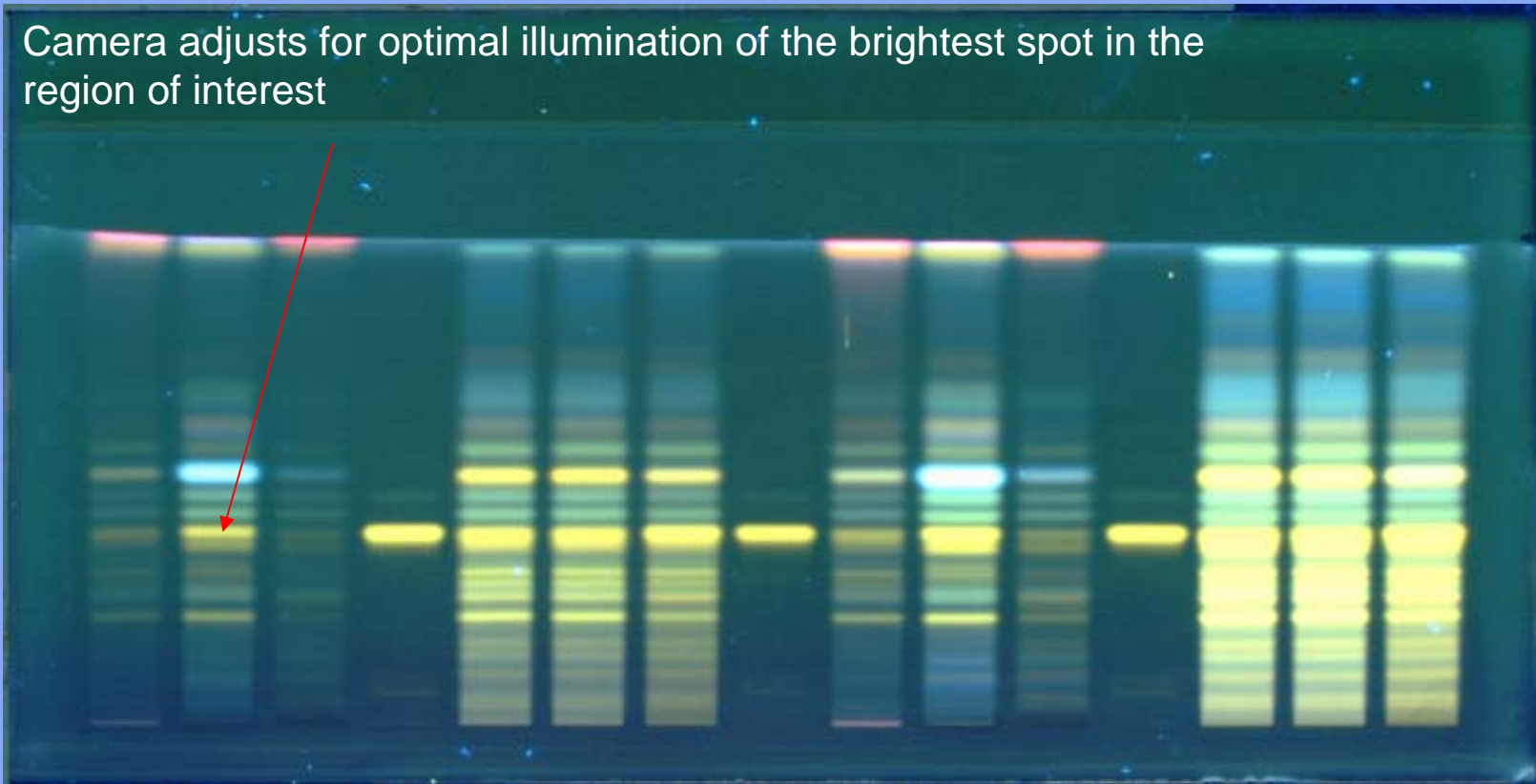
CAMMAG

If desired, a region of interest can be defined, in which the brightest spot is automatically found.



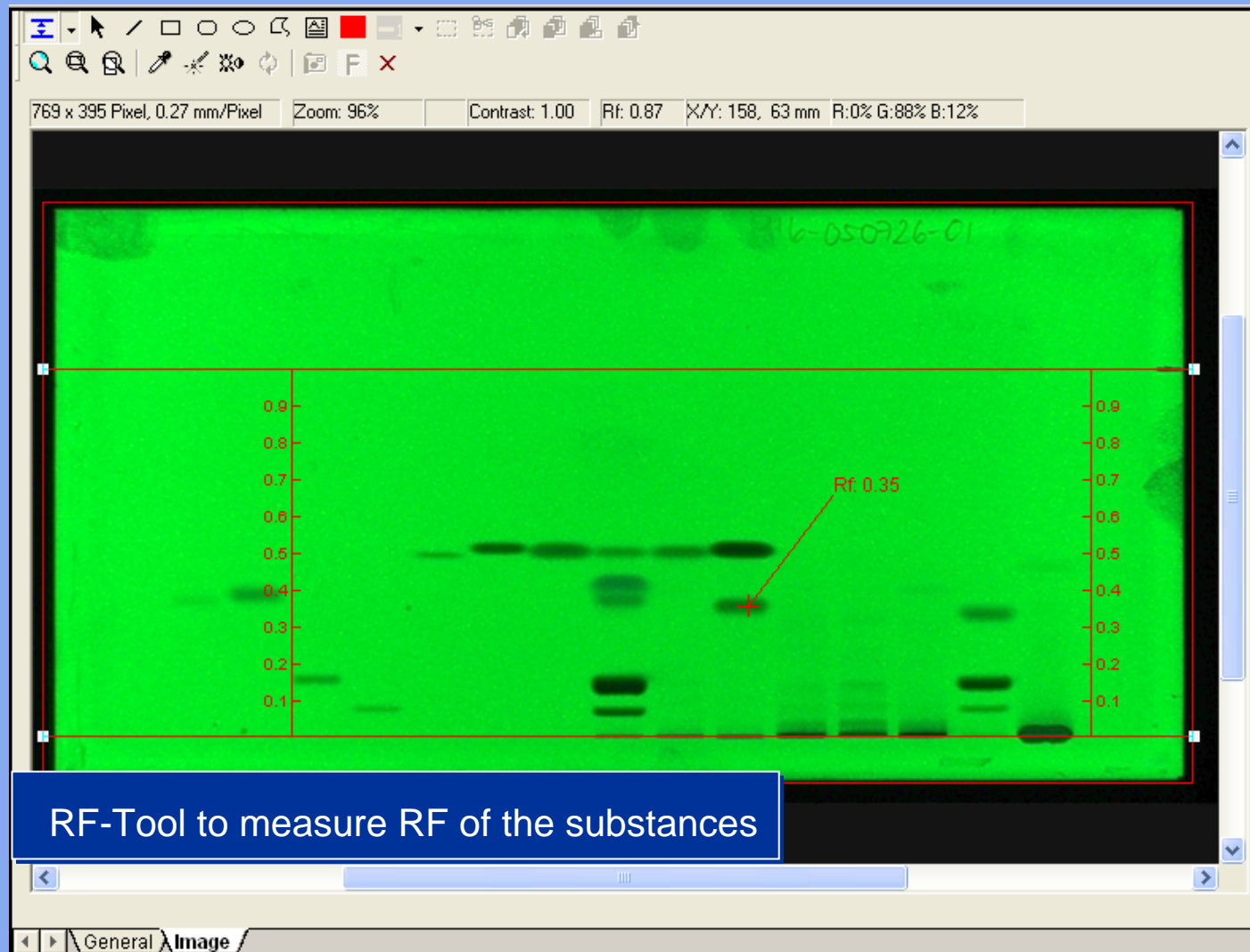
Manual Optimization

Camera adjusts for optimal illumination of the brightest spot in the region of interest



winCATS with TLC Visualizer

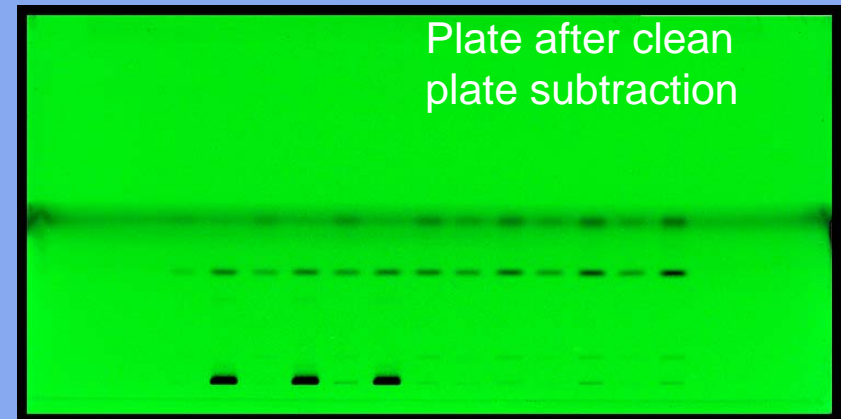
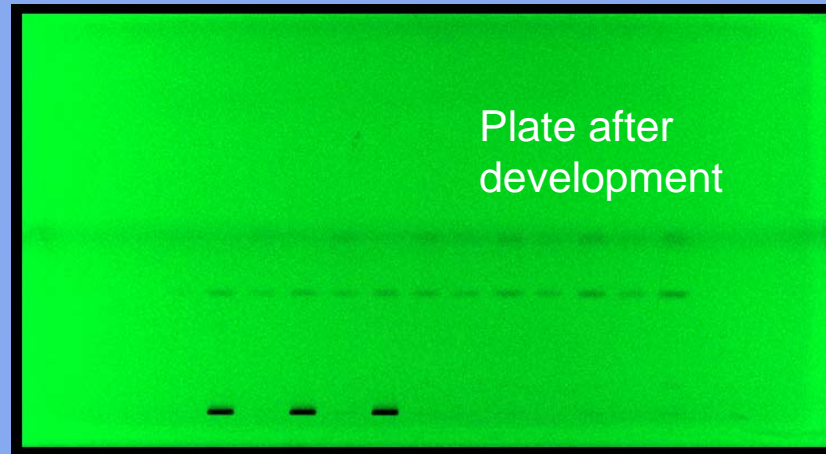
CAMMAG



RF-Tool to measure RF of the substances

Plate subtraction

CAMMAG



TLC Visualizer / Image Comparison

CAMAG

Show	Image	Refere...	Sample ID	Track	Source ID	Image ...	Author	Created at
<input checked="" type="checkbox"/>	0	<input type="checkbox"/>	Rheum officinale	1	C:\CAMAG\winC...	Image1	Daniel Handloser	29/11/2005 11...
<input checked="" type="checkbox"/>	9	<input type="checkbox"/>	Rhei sinensis	2	C:\CAMAG\winC...	Image1		
<input checked="" type="checkbox"/>	17	<input type="checkbox"/>	Rhei sinensis	2	C:\CAMAG\winC...	Image1		
<input checked="" type="checkbox"/>	1	<input type="checkbox"/>	Rhei sinensis	2	C:\CAMAG\winC...	Image1		
<input checked="" type="checkbox"/>	11	<input type="checkbox"/>	Rheum rhaponticum	4	C:\CAMAG\winC...	Image1		
<input checked="" type="checkbox"/>	2	<input type="checkbox"/>	Rheum palmatum	3	C:\CAMAG\winC...	Image1		
<input checked="" type="checkbox"/>	3	<input checked="" type="checkbox"/> isRef	Rheum rhaponticum	4	C:\CAMAG\winC...	Image1	Daniel Handloser	29/11/2005 11...
<input checked="" type="checkbox"/>	4	<input type="checkbox"/>	Rheum officinale	5	C:\CAMAG\winC...	Image1	Daniel Handloser	29/11/2005 11...

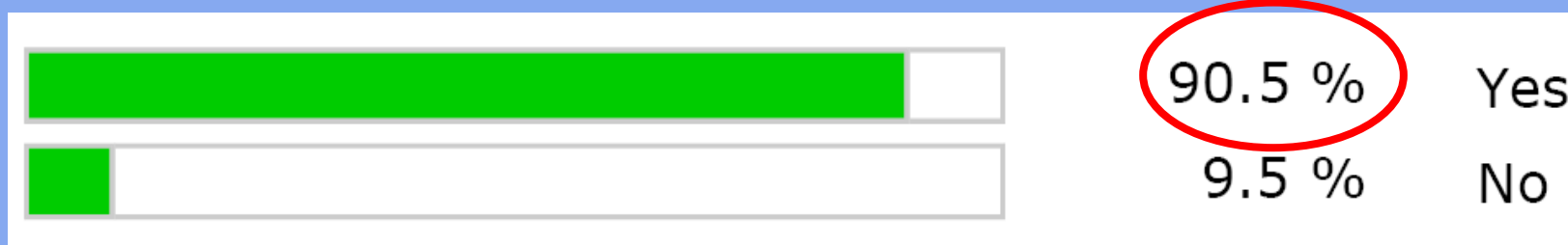
Image comparison viewer
(single and multi plate)

Tracks 19, 15, 3 (on the left)
are used for reference

TLC-MS

Customer Survey TLC-MS

- Do you have samples which you can't analyze with LC-MS



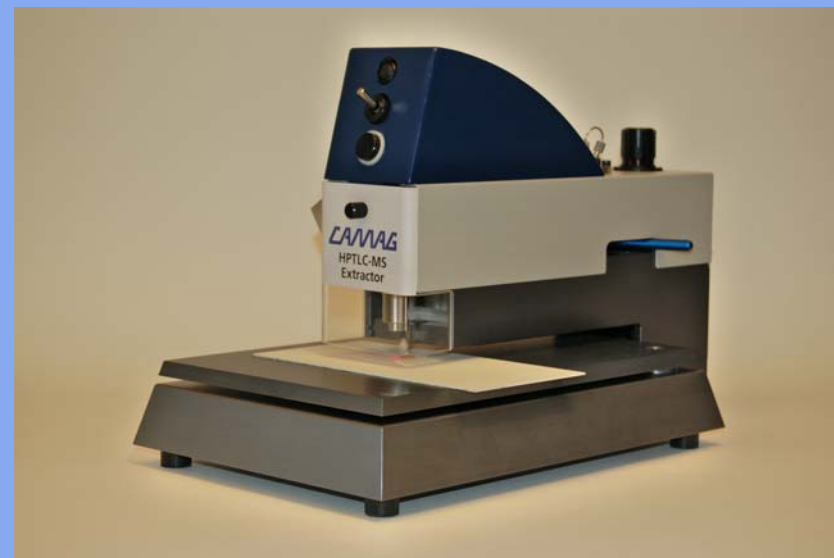
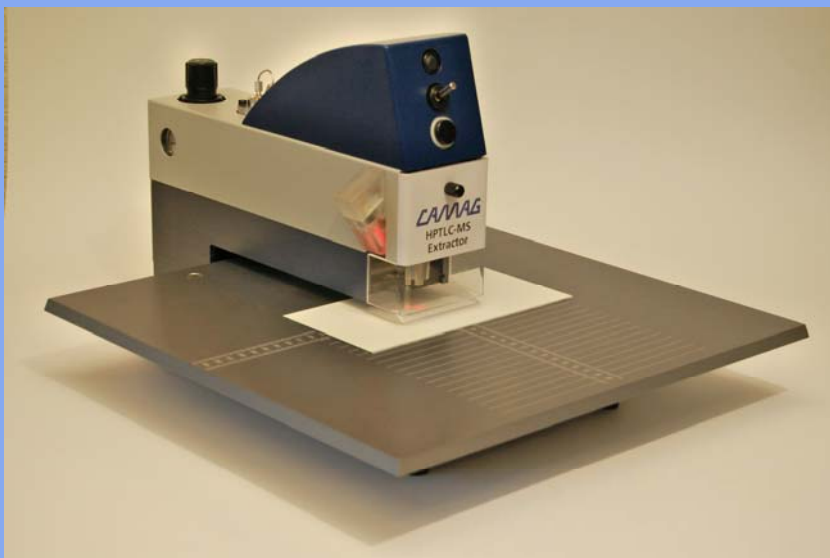
- Are you interested in a TLC-MS solution?



TLC-MS Coupling/TLC-MS Interface

- After this clear interest of the market CAMAG started TLC-MS coupling project
 - Easy and fast MS-analysis of TLC zones
 - Proved extractor principle of Dr. Luftmann (D)
- Semi automatic instrument involving:
 - Automatic plunger movement & force control
 - Automatic cleaning
 - Precise positioning

TLC-MS



TLC-MS

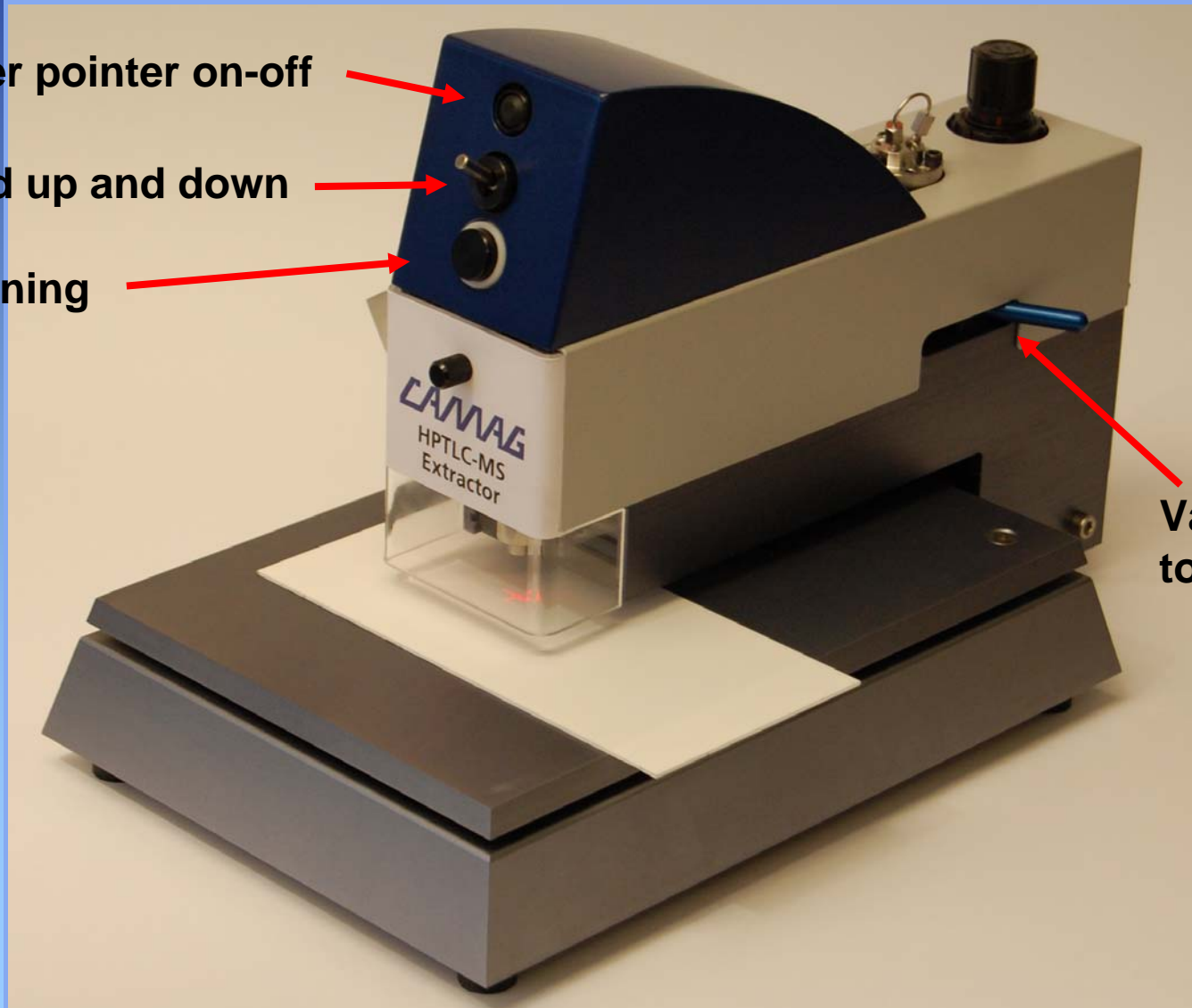


TLC-MS

Laser pointer on-off

Head up and down

Cleaning



Valve for connection to MS on/off

TLC-MS Coupling/TLC-MS Interface

- TLC-MS Interface is currently being tested at collaborating universities
- TLC-MS Interface should be available for customers Q1 2009

New Area Sales Manager responsible for France

CAMAG

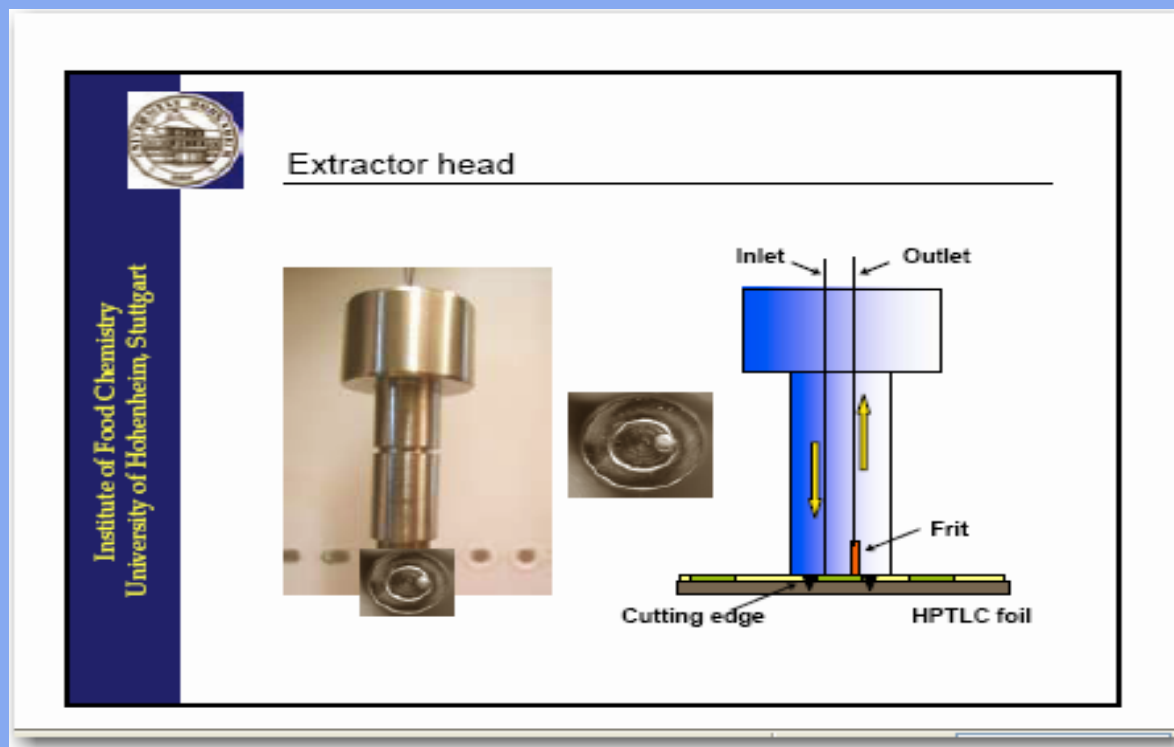


Raphael Vizzini

-
- Back up Slides

Principle of TLC/MS Coupling

HPTLC/ESI-MS



Principle of TLC/MS Coupling

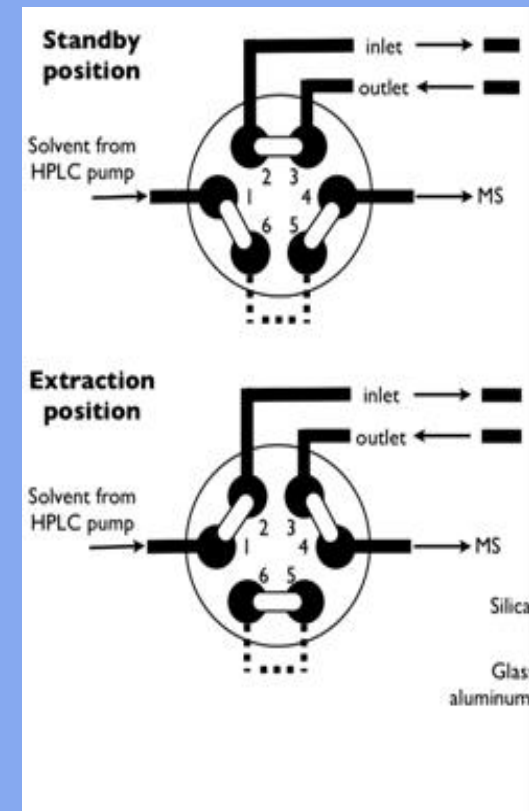
Valve control

- Standby position

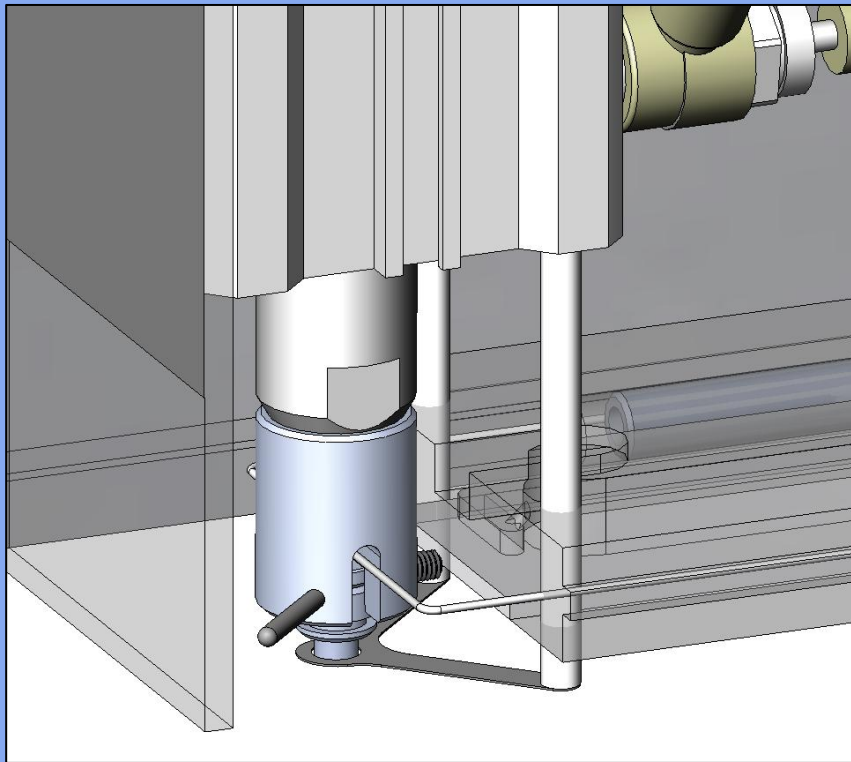
→ solvent bypasses extractor

- Extraction position

→ solvent passes extractor



TLC-MS Coupling Interface



Head Movement